

GRAND



HAVEN

www.grandhavenmhoa.com

Volume 5, Issue 3 Summer 2012

The Oak Tree

President's Message

Despite requests and pleadings, our villages continue to look unattractive as a result of a very limited number of residents who are placing yard trash at the curb many days prior to the designated pick up day. As we had indicated in the last edition of the Oak Tree, yard trash is picked up each Wednesday and should not be placed at the curb prior to Tuesday.

As we go into the growing season, the amount of yard trash will significantly increase and having it at the curb for 2, 3, or more days prior to collection does not serve to enhance the beauty of our community. If you are a "week ender" and work in your yard at that time, the yard waste can be kept on the side of your home, hopefully as much out of sight as possible, and brought to the curb on Tuesday. Please remember that if you are employing a landscaping company, it is their responsibility to dispose of all yard waste that they generate.

Although the vast majority of our residents have done a great job regarding the above, there remain a few individuals who either are not aware of the timelines or choose to disregard them. In response, our Community Manager has been directed to include a Monday "drive through" of our community and notify residents who are in violation. A repeat violation will result in the resident being cited and ultimately placed on the agenda of the fine committee. Since we all want to have our neighborhoods look as attractive as possible, both for ourselves and prospective home buyers, it is anticipated that all will contribute towards making that goal a reality.

On behalf of your Board of Directors, I would like to express our sincere appreciation for the efforts expended by each of you in making Grand Haven a truly outstanding community and a most enjoyable place to live. We have every expectation that the best is yet to come.

Dr. Robert Jay Carlton, President
Grand Haven Master Association



GHMA Meeting Schedule for 2012

The Board of Directors of the Grand Haven Master Association (GHMA) will meet on the third Friday of every month (unless otherwise noted).

All residents are welcome to attend.

When: 2:00 PM, Friday, August 24, 2012
 2:00 PM, Friday, September 21, 2012
 2:00 PM, Friday, October 19, 2012
 2:00 PM, Friday, November 16, 2012
 2:00 PM, Friday, December 14, 2012

Where: Creekside Amenities Center in Grand Haven
 2 North Village Parkway

In This Issue.....

President's Message	1
Southern States	2
Neighborhood Watch.....	4
Tennis Court Clarification.....	3
FAQs	9
Flagler Humane Society	5
Grand Haven Women's Club.....	5
Wild Oaks Eagles.....	4
CDD Corner: Crossings Wildfire Exit Project	7
CERT and Hurricane Preparedness	3
Flagler County Education Foundation	6
Flagler County Art League	8
Palm Coast and Grand Haven History	10

Coming in the October Issue.....

- ◆ Next: From ITT to LandMar: Part two in a series by Palm Coast Historian, Art Dycke
- ◆ Grand Haven Crossword Puzzle

GHMA Board Members

PRESIDENT	Rob Carlton	447-5536	rjcarlton5@aol.com
V. PRESIDENT	Patty Stauffer	446-2277	postauffer@earthlink.net
TREASURER	Gerald Kagan	445-0688	gjkagan@bellsouth.net
DIRECTOR	Murray Salkovitz	986-4491	msalkovitz@yahoo.com
DIRECTOR	Victor Natiello	986-2274	vicnatiello@aol.com



As a reminder, please remember these **CC&R enforcement focus items**:

Roof Mold – Each owner should take a look at their roof and consider having it cleaned. The roof itself can and will get dark in color and/or moldy (particularly tile roofs). Also the border or fascia around the edge of the roof may need attention as well. This is something to plan for at least annually if not more frequent.

Lake Bank Maintenance – Each owner living on a retention pond needs to continually maintain their lake bank. Each lake bank (where there is not a concrete stem or retention wall) was originally developed and planted with spartina grasses. These are the feathery bushes or clumps of grass about 4 feet tall that were planted to keep the lake bank from eroding. It is each lake bank owner's responsibility to preserve those spartina grasses and keep the lake bank free of weeds, vines and/or wild growth. This maintenance responsibility is best accomplished with regularly monthly attention. If your spartina has died or is not there, then you will need to replant them. Please contact Troy Railsback with Southern States Management Group at 386-446-6333 for further details on planting requirements.

If you have questions about any of these items, please contact Troy Railsback (Ext. 307) or Lindsay Marriott (Ext. 310) at 386-446-6333.

Grand Haven Website

The Grand Haven Master Association has its own website, www.grandhavenmhoa.com which includes information about Association activities, meeting schedules, agendas, FAQs and financial information.

The site also lists ADC guidelines and forms for residents to use to make submittals for changes to their property. For more information check out the website.

The Oak Tree Staff

EDITOR	Patty Stauffer	postauffer@earthlink.net
FAQS	Nancy Snodgrass	nancysnodgrass@cfl.rr.com
PRODUCTION	Troy Railsback	trailsback@ssmgroupinc.com
CONTRIBUTORS	Art Dycke	Barry Kloptosky
	Stephen Davidson	Nancy Carlton
	Gretchen Butler	Ann DeLucia
	Diane Voigt	Peggy Smith

Hurricane Season is here

The Grand Haven CERT (Community Emergency Response Team) is comprised of 50+ residents that are part of a nationwide organization of emergency responders that have been trained by the Flagler County emergency operations staff to aid neighbors in the event of a hurricane, wildfire, tornado, or other disaster.

All of the Grand Haven CERT members have been trained in team organization, disaster preparedness, basic first aid, light search & rescue operations, damage assessment, and fire suppression.

In a disaster situation, first responders such as the sheriff and fire departments may not be able to get to Grand Haven immediately. The Grand Haven CERT Team would offer basic assistance to residents and keep the first responders informed about conditions in Grand Haven via two-way radio communications.

The Grand Haven CERT team meets monthly and is preparing for the hurricane season by holding periodic simulated drills including two-way radio communication exercises with the county emergency personnel. Advance preparation will help save valuable time during a real emergency. Grand Haven residents are encouraged to join the CERT Team. Previous emergency experience is not required.

As a Grand Haven CERT Team member, you will be part of the Flagler County Community Emergency Response Team. You will be trained by professional emergency responders and management personnel in areas that will help you take care of yourself, family, and neighbors before, during, and after a major emergency such as hurricanes, wild fire, tornadoes, etc. As an organized team, you will provide vital services until professional emergency services arrive.

Please contact Frank Benham fbenham@cfl.rr.com 386-864-7004 if you have questions about this program.



Grand Haven CERT Team

Tennis Court Clarification

The Drainage Repair Project versus The Re-Surfacing Project

There has been some confusion and mis-information about the newly renovated tennis courts. These are two separate projects that were originally intended to be completed separately and independently of each other. When the tennis courts were closed for the drainage repair project, the decision was made to complete the resurfacing project simultaneously, in an effort to minimize the amount of time that the courts would be closed for repairs.

The tennis court resurfacing is a project that was added as a line item to the 2012 Capital Plan. The resurfacing project is listed in the budget under resurface courts 1-4 and resurface courts 5-7. This is a maintenance process that is done to the courts every three to five years as needed. The purpose of this procedure is to remove dead surface clay, scrape and level the court surfaces, and add a new layer of top clay to the court surfaces. This process has nothing to do with the tennis court drainage repair project.

The tennis court drainage repair project was an infrastructure repair project that was originally discussed in a Board meeting four years ago. This project was brought to the attention of the Board in an effort to correct the numerous infrastructure deficiencies that existed regarding the grading and drainage around the seven tennis courts. These grading deficiencies were causing improper drainage which resulted in numerous hazards and safety issues, such as, areas of standing water which resulted in formation of algae, and spillage of clay onto sidewalks and landscape beds, resulting in safety issues.

The entire perimeter of the tennis courts was re-graded, and concrete troughs were added around the perimeter of all seven courts to eliminate these concerns. New landscaping was planted and river rock was installed in the landscape beds to prevent future washout. Additional drains were also added to achieve proper drainage in areas that had no existing drains. The funding for this project was included on the Capital Plan under general infrastructure replacement/repair.

As the drainage renovation project progressed, numerous other underground issues and deficiencies were identified, which required additional reconstruction/repair. Underground irrigation and electrical lines were in the way of the drainage troughs and needed to be moved. Numerous existing drains were buried and blocked, and needed to be opened, cleaned and raised to grade level for proper drain function. Roots from the existing palm trees were growing under the tennis courts and sidewalks, causing voids under the surfaces, resulting in settling and cracking of the sidewalks and tennis court surfaces.

Continued on Page 5

Once again the Neighborhood Watch steering committee would like to thank everyone who attended the Neighborhood Watch meeting on May 23rd and the recent meeting on July 23, 2012. We, as a community learned so much from that first meeting. Knowing that the Sheriff's Department is doing their job and doing it well, speaks to everyone who is fearful of crime in a community where crime should not exist.

As we have previously stated, the standing room only attendance at the May meeting was a sign that there was anxiety and doubt and that you had questions and concerns needing to be addressed. We are hopeful that the information you received that evening was helpful and that you were reassured that things were okay in Grand Haven.

But, you can't just sit back and forget about what we learned. The Neighborhood Watch program is a good program and will only be as successful as you will let it be. You must stay diligent in your actions and be alert to things that are out of the ordinary.

Please keep these tips and suggestions in mind every day:

- Call 911 if you feel you are being threatened. If you are unsure about whether you should call the Sheriff's Department, MAKE the call! They encourage it. If they don't know that crime is happening, how do you expect them to respond to it?
- Remember to keep the non-emergency Sheriff's telephone number handy (386-313-4911). If you file a report, get a case number.
- Fill out a Grand Haven Incident Report (found on the website: www.grandhavenmhoa.com - Neighborhood Watch section of the website.
- Contact your Village Capt/Block Leader so that the incident can be communicated throughout the community.
- Get to know your neighbors and rely on the trusted ones when you are away.
- If your vehicle is left outside, lock it!
- Look for strange vehicles in driveways or parked on the street. If you know it is not a welcome visitor, call the non-emergency number.
- Pick up papers in the driveway so they don't accumulate.
- Call your neighbor if they forget to close their garage door.

Remember, solicitation by anyone including door to door is prohibited in Palm Coast. Unlicensed & uninsured solicitors are not welcome. Don't hire them! You will be liable if they are injured on your property.

We need volunteers to make our community safer. If you would like to volunteer to be on the Neighborhood Watch Committee, please contact Pat Maloney at 864-7195 or pmal37@aol.com

Gone Fishing!

Most Florida eagles choose to migrate during the summer months yet some adult eagles will remain in their nesting area thanks to Florida's abundant food source.

Considering Florida's Bald Eagle nesting season starts in October and concludes mid May our nesting pair at Wild Oaks consistently take their summer "hiatus" separately likely heading north to enjoy cooler climates. Their two fledglings left together on April 15, dad left on May 21 and mom left on June 3rd.

All hopes mom and dad will return the first part of September and start their process all over again. Following them (throughout the fall months) will likely be a number of off-spring from their past clutches flying and perching in what they consider their "home territory".

Whereas the new eagle pair in Grand Haven have been spotted in the community recently at least one eagle! All hope they too will remain a bonded pair and complete their nesting duties in the fall and produce off-spring.

Submitted by:
Gretchen Butler
Grand Haven Resident
Florida Audubon Senior EagleWatch Volunteer
bengals2@earthlink.net



Wild Oaks Fledgling coming in for a landing

Mom caught a fish that was too heavy



Wild Oaks Fledglings "sky dancing"

Mom and Dad perched on nest tree



Grand Haven Women's Club

Thank you GH residents for making our book sale this year another huge success. We raised \$1,746 by selling many, many of your donated books at \$.50 and \$1.00 a piece. As you can see, you did a wonderful job donating and purchasing books.



The money the Club has raised this past year goes to many charities throughout Flagler County. Our next meeting will be in September and if you would like to attend a luncheon/meeting, please contact:

Annemarie Schutz, Membership
(386-246-5023; or
Sandra Mankowich, President
(386-864-7548)

Submitted by
Peggy Smith, Publicity



Tennis, continued from Page 3

The tennis court light poles were leaning, due to rusted nuts, bolts and mounting plates that were originally installed below the surface of the clay. The lights needed to be remounted above the clay to stabilize the light poles and eliminate the safety concern. The tennis court light switches were also rusted, resulting in a potential fire hazard. These switches also needed to be replaced.

The process of identifying and correcting all of the issues listed above, resulted in numerous delays regarding the overall completion date of the project. The completion of this project has resulted in a drainage system that is functioning properly and more easily maintained.

The Grand Haven CDD, and the entire Operations staff and contractors would like to thank all of the residents for their patience and understanding during the course of this renovation project.

Any questions or concerns can be directed to the Grand Haven CDD Office at 2 N. Village Parkway, or you can call the CDD Office at 386-447-1888.

Thank you.
Barry Kloptosky
Operations Manager, CDD

The tennis court project is now finished and from all accounts—a job well done. Check out the before and after pictures:

www.grandhavencdd.org/docs/TennisCourtEnhancement.pdf

Flagler Humane Society

There are more exciting changes at the Flagler Humane Society! A new Board of Directors has been appointed and we are all looking forward to moving ahead with making our Shelter a facility in which the entire community can be proud.

New members of the Board include: **Sam Cline**, the owner and CEO of Cline Construction, who will be focusing on improving our physical facility and building ties with the business community; **Elizabeth Robinson**, who has been very active in Flagler County and will be concentrating her efforts on fund raising and community involvement; **Joe Rossheim**, owner of U-Name-It Apparel and will be strengthening our position with young professionals and business owners; **Bill Smith**, who is a prominent financial advisor and CPA, will serve as the Shelter's Treasurer; **Robin Goss**, a dog trainer and behaviorist who is working with our dogs to evaluate them and help them become more adoptable; and, **Dr. Gary Shelton**, who owns Shelton Veterinary Clinics and who is also assuming the responsibility as our Medical Director.

These new members will be joining **Diane Voigt, Nicole Brose, and Dave Zaslavsky** in ensuring that all of our animals get the best possible care while they are with us awaiting their forever homes.

We often are asked if we are a no-kill shelter and we must answer no. Because we are a full-service shelter, which means that we choose to take every animal that comes to our door, we must accept responsibility for animals that aren't cute or aren't healthy or aren't playful and friendly. There are just many animals that cannot be placed in homes for one reason or another. What we do try to do to the greatest extent possible, is to ensure that every animal gets a chance.

As of June 17, we had 139 dogs and 332 cats (it is kitten season) in our Shelter. And every day anywhere from 5 to 20 new animals arrive. We have greatly increased our adoptions—50 animals found homes during the week ending June 18—but we are still filled to the max!

We need your help to save animals; we can't do it ourselves. We need money to provide care for them, we need volunteers to help us take care of them, and we need foster homes to take some of the animals home who need special help and to free up space in the shelter.

The Flagler Humane Society is making great strides and we hope we can count on you to support us. Visit our website, www.flaglerhumanesociety.org and "Friend" us on our Facebook page. We are part of your community and the only full-service shelter in Flagler County. Please help us help our animals!

Diane Voigt
Your Grand Haven
Neighbor



Flagler County Education Foundation (FCEF)

As a member of the Board of Directors of the Flagler County Education Foundation, I can speak to the generosity of the Grand Haven community first hand. Many of our residents have been tremendous supporters of the Education Foundation for the last several years. If you are not familiar with the Flagler County Education Foundation, it is a non-profit organization committed to generating financial support to enhance the programs of the Flagler County Schools and improve the lives of its students. Founded in 1990, the Flagler County Education Foundation (FCEF) was an all-volunteer organization until 2008, when it hired its first full time Executive Director. Today, we still have just one full time employee and, according to our audit, administrative expenses less than 3%.

Sometimes we forget how much poverty exists in Flagler County, especially with our current economy. The School District has been challenged with declining revenues due to the drop in home values and have made some prudent decisions about how funds will be spent. I am constantly impressed by the programs being offered in our schools and how the Flagler County students are being prepared to compete in a global society. The use of technology and service learning projects has transformed the way children are learning today, preparing them for college or a practical career when they graduate high school. However, currently over 65% of our entire student population qualifies for free or reduced lunch and 308 students are homeless in the county.

Funds raised by FCEF support the following programs, which are intended to enhance existing programming in the schools:

Teacher Grants – teachers submit grant requests to conduct programs that are innovative, but for which funding is not currently available. For as little as \$500, some of these teacher grants have impacted as many as 1,000 students with a project in a school. Many of these innovative projects have been replicated at other schools. Additionally, companies like AT&T have offered grants for STEM projects (Science, Technology, Engineering & Math), which has spurred the STEM Academy at Matanzas High School. It is incredibly impressive what these students are accomplishing.

STUFF BUS – this program was born out of need. It is a converted school bus that visits the schools with supplies that are fundamental to children's needs. Guidance counselors & teachers who know the needs of their children request basic supplies from the bus. Things like shoes, socks, undergarments, toiletries, shorts and shirts (jackets in winter) are provided for these children in need. The Grand Haven Woman's Club is a proud sponsor of the bus and the GHWGA has served as a collection point for donations for the bus.

Take Stock in Children – this is a program that identifies at risk students in middle school and provides support that includes: mentors, student advocates, case managers, tutoring, long-term support, parental involvement, career guidance in addition to full tuition through Florida Prepaid college scholarships. While receiving a promise of college tuition is life-changing, it is not a gift; it must be earned. Students and parents sign a contract agreeing to abide by Take Stock's high standards that include meeting with their mentor, keeping their grades up, and remaining crime and drug-free. Currently several of our Grand Haven residents are mentors for these students. Additionally, Sue and Pete Freytag have generously funded a scholarship for a student in the program.

How does the FCEF raise this money? Well, again it is through the generosity of the Flagler community, many of whom live here in Grand Haven:

Mardi Gras – our annual casino night/dinner fund raiser. In February, 2012, 30% of the supporters of this event were Grand Haven residents, many of whom have attended the last 5 or 6 years. It is a fun evening and a chance to "gamble" and not lose.... Consider your loss a donation to a great cause!

Golf Tournament – always a fun event. This year the tournament will be at the Club DeBonmont at Plantation Bay on September 21. Each player will receive a hat, shirt, 1 year subscription to Golf Digest and a fun-filled day... there will be food and games on every hole and prizes galore. Entry fee is \$125/player, \$500/foursome.

Individual contributions – FCEF has been fortunate to have the support of some local family and corporate foundations, but we could not continue the work we do without the generosity of individuals.

I realize that many of our Grand Haven residents have not been in the Flagler schools lately, if ever. But I would encourage you to learn more about the programs that are preparing the youth of our county to be our future leaders. If you would like to learn more about the Flagler County Education Foundation or take a tour of one of our schools, please call me at 447-5536. You can visit our website at www.FlaglerEdFoundation.org or contact our Executive Director, Deborah Williams at 437-7525, x3125 or at wiliamsd@flaglerschools.com.

Thanks again to all of our neighbors who have so generously supported the efforts and programs of the Flagler County Education Foundation. You are making an investment in our community's future.

Nancy Carlton
Grand Haven Resident and FCEF Board Member

Flagler County
Education Foundation

The Crossings Wildfire Emergency-Only Secondary Vehicular Exit

Readers may have noticed a new unpaved and gated "dirt road" on the Westerly side of Colbert Lane. This "dirt road" is in actuality a very recently completed wildfire emergency-only secondary exit out of the rear of the Crossings.

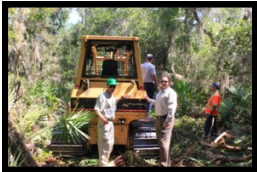
The one and only permitted use of this secondary exit is to save lives during a true wildfire emergency. For environmental and ecological reasons, the pathway is constructed of rolled, hardened but pervious shale surface. The roadway is designed to remain "high and dry" during wildfire (our dry) season. It is not designed for use during hurricane (our wet) season, as parts of the path may be under water. It is also not designed as a casual walking path, as it has been carefully cut through an active forest alive with ticks, snakes, wild pigs, and gators!

A brief history of the project: In April of 2010, as part of a Grand Haven Wildfire Mitigation Project Phase 2 assessment, members of the Grand Haven Firewise Communities/USA Board, Flagler County Emergency Management Chief Troy Harper, Florida Division of Forestry Wildfire Mitigation Specialist Timber Weller, City of Palm Coast Landscape Architect Bill Butler, Trapper Art Stevens, and residents of the Crossings, took part in a walking tour of a former hunting path/ unpaved road thought to possibly connect the rear of the Crossings subdivision (Crosslink Court) with Colbert Lane. The various groups wish to thank Tom Hosey, a resident of the Crossings, for first suggesting the idea.



From the beginning

The Crossings Village of Grand Haven was planned, developed and constructed in an era during which only one means of entrance/egress to a subdivision was allowed and permitted. Subdivisions of the size of the Crossings are now required to have two means of entrance/egress. The Crossings contains 134 completed and occupied homes and is completely surrounded by forests of the Graham Swamp Preserve. Should a wildfire cross from I95 into, or start in the Graham Swamp, and should the one narrow exit roadway out of the Crossings become obstructed, residents would be trapped with no secondary vehicular emergency exit. The potential for loss of life could be significant.



Davidson—Harper

Dr. Steve Davidson, as Chairman of the GH CDD and President of the GH Firewise Communities/USA Board, was appointed lead in what became over two years of land use planning and permitting with the City of Palm Coast and Flagler County. Jurisdiction of the path between the St. John's Water Management District, The City and the County had to be determined. Eventually the project was sited on Flagler County lands only.



Clearing the roadway

A Right of Use Easement agreement between the County and GH CDD was developed.. Dr. Davidson was appointed GH CDD Agent by the GH CDD Board of Supervisors with authority to sign the required County and City documents. Land use planning was then reviewed by the City of Palm Coast Planning Department. The Flagler County Department of Public Works then developed the final site plans, and completed the actual site work – clearing, leveling, adding surface shale, rolling, installing posts, security gates and locks- on 6/22/2012.

The Grant of Easement Agreement for use of the emergency exit though County lands specifies the Grand Haven CDD as the responsible party re financing the project and the County Department of Public Works to perform the site work at cost. The GH CDD has applied the last of the original bond- issue funds, which are legally dedicated to Master Infrastructure projects and cannot be applied to repairs, maintenance or general operations of the District, to cover the entire cost of the project. The GH CDD Board of Supervisors set these funds aside several years ago so that this Master Infrastructure project could be financed without impacting the subsequent fiscal year budgets or assessments.

As previously stated, the final project has been very recently completed. A pervious (unpaved), vehicular path has been carefully created by the Flagler County Department of Public Works, taking into account various jurisdictional, environmental and historical considerations. Culvert pipe has been installed in the swale area adjacent to Colbert Lane, and the path feathered into the Colbert Lane/Crosslink Court terminations. Posts with chained, locked security gates have been installed on both path terminations.

The Grand Haven CDD, GHMA, GHFC/USA, GH CERT, and residents of the District wish to thank the many staff members of the City of Palm Coast, Flagler County, and especially Emergency Management Chief Troy Harper and the Flagler County Department of Public Work employees, for the successful cooperative effort to enhance the safety of District residents.



Bobcat Steve

Submitted by:
Dr. Steve Davidson
Chairman, GH CDD Board of Supervisors
President, GH Firewise Communities/USA
Co-Coordinator, GH CERT
www.grandhavencdd.org



Finished Exit to Colbert

Flagler County Art League



"I'd like to share with you why we think the arts are so important to the heart and soul of a community and why the community should care about the arts," notes Ann DeLucia, newly elected president of the Flagler County Art League (FCAL) and a Grand Haven resident. Ms. DeLucia made these comments to a recent gathering of visitors from the Flagler County Chamber of Commerce, a presentation hosted by FCAL at its City Marketplace gallery. "Whether it's the visual arts as you may see here in our gallery, or music, theatre, dance, poetry, literature or any other form of expression, supporting the arts creates jobs, vibrant neighborhoods and more 'feet on the street'. If Flagler County is ever going to return to a dynamic economy, the arts can play a major role in enhancing community development, attracting new businesses, and improving the quality of life in our city and county."

A case in point, one of our Grand Haven residents came to town for the first time when FCAL had their purple ART banners hanging from Palm Coast Parkway. Seeing those banners flying, she realized that she had come to the right place—a community that obviously felt art is important.

The Flagler County Art League has been part of the Palm Coast community since 1978 when a small group of artists had a mission to develop a cultural arts organization. That group has now grown to almost 350 art lovers, supporters and artists with almost a quarter of their membership living in Grand Haven.

After years of meetings, workshops and fine art shows in a variety of venues around the county, FCAL opened a gallery and art center in City Marketplace in 2010. If you are looking for a place to take your guests or are out to lunch with friends, add a visit to the art center and buy something unique in the gift shop!

FCAL offers free fine art show opening receptions on the second Saturday of every month from 6-9pm in cooperation with nearby Hollingsworth Gallery. Come for free wine, food, fun and fine art – sometimes even live music or poetry. See a review of our most recent show, the "Best of the Best" on www.flaglerlive.com. These are works that have won awards in the nine monthly shows that took place from September 2011 through May 2012 .

In addition, one of the gallery walls has an installation of numerous works by the Altered Art group, entitled "It's About Time"- most of which are working clocks and will be in place until September 8th. It's wonderful standing in the gallery and just listening! Come and find wonderful local fine art – paintings, photography, sculpture and more, all of which will be available to view during the months of July and August at the "Summer Gallery Sale" with an encore opening reception on August 11th.

To fill an ever-growing gap in arts education, the League has supported the Flagler County Schools through the years, by offering more than \$17,000 in art scholarships; members have judged student art shows and they have offered space in their galleries for student work. There is a "Creative Kid's Camp" this summer in July and August, as well.

The league's mission is not only to support its members but to serve the art needs of the community. In March, FCAL organized an event in partnership with the Flagler Playhouse, the Flagler Youth Orchestra and the Palm Coast Foundation for Arts and Entertainment, to present "A Taste of the Arts" -an evening of food, art, wine and theatre. It was a sellout and an enormous success. Expanding these initiatives is planned for the future.

Art classes are offered throughout the year for both adults and children in addition to workshops taught by nationally known artists. Current classes include clay, watercolor, oil, Chinese painting, acrylic, photography, altered art , drawing cartoons and much more coming!

Monthly meetings take place from September to April and in addition to the opportunity for artists and their friends to get together, they offer presentations by well known speakers on a wide range of art-related topics – all free and open to the public.



FCAL is in the process of planning many new programs, classes, art lectures in the months ahead. For more information go to their web site: www.flaglercountyartleague.com or call Grand Haven resident, Ann DeLucia, FCAL President at 386-447-9875.

Frequently Asked Questions

Q. We recently moved to Grand Haven and now we want to repaint our house from the boring color it is to something we like. However, because this is a “deed restricted” community we have to get approval of our color choice from the ADC. That’s ridiculous! Why can’t we select whatever WE want? This is America. We should have freedom of choice!

A. Here is what “freedom of choice” ended up looking like in another community that didn’t require approval from an Architectural Design Committee!



Q. We will be leaving soon for our home in the Northeast and don’t plan to return to Grand Haven until the end of September. I want to hang my plywood window covers before we leave in case there are any hurricanes while we are away. There is no problem with that is there?

A. Yes, there is a problem doing that. Your neighbors shouldn’t have to look at a plywood bunker for three months. Hurricane shutters can be closed when an official hurricane watch is announced and are to be taken down or opened 72 hours after the official watch has been lifted. If you must, make arrangements with a friend or neighbor before you leave to install the window covers as needed.

Q. What should we do if there are newspapers and/or packages piling up in front of a neighbor’s home?

A. Be a good neighbor and collect the items and keep them until your neighbor returns. Uncollected mail and packages are sure signs to a thief that no-one is in residence and that the house is likely to be unprotected. It would be very smart and helpful for a homeowner to notify a friend or neighbor when he/she is leaving for an extended period of time.

Q. In case of a crime in progress can we call the Guard Gate for help?

A. No, that is NOT the proper or official response to a crime in progress. The guard has no authority to act in such a situation. The correct and immediate response should be to call 911 which connects you directly to the Flagler County Sheriff’s Office or you can call the Palm Coast Sub Station at 586-2621. If you have a non-emergency question or concern you can call 437-4116.

Q. I didn’t get a copy of the 2012 Grand Haven Community Binder and they don’t seem to have any at the Village Center Office. Is it too late to get one?

A. No, it is not too late. However, you must go to the CDD Office at Creekside with your current driver’s license or an HUD Statement (if you are a recent purchaser of property in Grand Haven) to sign for the new 2012 Directory.

Q. As summer in Florida is now here what are the watering rules again? I can never keep them straight. And several of my neighbors always seem upset when my irrigation system runs during the day.

A. The St. Johns Water Management District, which includes Grand Haven, and the City of Palm Coast have specific watering regulations. The rules limit landscape irrigation, i.e., watering of lawns, flowers, etc., to two days a week during Daylight Savings Time and one day a week during Eastern Standard Time. It also limits the amount of watering to ¾ of an inch per irrigation zone and no more than one hour per zone. The rules also require odd numbered addresses to water on Wednesday and Saturday and even numbered addresses to water on Thursday and Sunday. Class 1 users of landscape irrigation may water between 2 a.m. and 8 a.m. (Restrictions apply to private wells and pumps. Exceptions apply if new sod and landscaping are installed.)

Q. My husband and I really enjoy using the beautiful pool and pool area at the Village Center. However, over the last several weeks the behavior at the pool has become loud and intrusive. I know there are rules regulating proper decorum and safety. Please list some of them.

A. Sadly, some people don’t think the rules apply to them. . Our pool is for the use and enjoyment of EVERYONE.

Here a few of the major ones that need to be followed by all:

- ♦ Children under 13 years of age must be accompanied at all times by a parent or adult patron during usage of the pool facility;
- ♦ No diving, jumping, pushing, running or other horseplay is allowed in the pool or on the pool deck area;
- ♦ proper swim attire (no cutoffs) must be worn in the pool; the changing of diapers or clothes is not allowed poolside.

For a full listing of the pool rules consult the new Grand Haven Community Information 2012 Binder.

Q. It has become dangerous walking in Grand Haven of late. There are so many low-hanging tree limbs hanging over the sidewalks in front of residences that I fear that I could be impaled. What are the rules for trimming street and sidewalk trees?

A. Some PLM communities do have street tree trimming in their contractor’s scope of work. That standard is a 7 foot minimum clearance from the ground. To give a uniform appearance, trimming should be at least this height completely around the tree.

Some oaks are not mature enough to trim the branches that high and some residents have street trees that are “house height” species. These trees should be trimmed to keep branches from intruding onto the sidewalk area and onto cars that may pass by or park on the street side of the trees. If a resident is not sure of his/her own tree-trimming skills, a company should be hired with the ability to consult a certified arborist so no damage is done to the tree(s). The City of Palm-Coast has stipulations against “top hatting” trees such as Live Oaks.

Grand Haven-the way we were

First of a series By Art Dycke

Foreward

As the historian for the city of Palm Coast, I have always endorsed the much-advertised claim of developer ITT that our community was "...the perfect place to live."

This makes the following "not so short" history of Grand Haven a labor of love. I hope to outline relevant and interesting aspects of our past from the "beginning" until ITT began building Palm Coast in 1969. Then I would like to trace our past owners, from ITT Community Development Corporation to Lowe Enterprises to LandMar Group and examine details of the Colbert Lane extension and the creation of the Grand Haven Community Development District.

But most of all, I would like to pass on to you the memories, stories and photos that residents have been sharing with me about their lives in Grand Haven. (Please keep them coming!)

Before ITT

I will begin this short history 25 million years ago, by which time Grand Haven (and the rest of Florida) had emerged from the ocean. I will spare you details of the mastodons, giant sloths and paleo-indians that roamed our area by asking you to visit the Daytona Beach Museum of Arts and Sciences to view its fascinating displays and exhibits about our earliest inhabitants.

We know that sometime between 800 and 1200 AD, real people inhabited the Grand Haven area and left behind a midden of their broken artifacts, animal bones, shells, and other debris. Our property was also used by itinerant Timucuan and earlier Indians who camped near what is now The Crossings.

In 1513, Florida was "discovered" by the Spanish, transferred to the English in 1763 and returned to Spain in 1783. Grand Haven is built upon the drained part of an extensive swamp, which covered the entire area between the Matanzas and Halifax rivers before they were connected to form what is now the Intracoastal Waterway. Lt. Colonel John Graham, a Georgia planter and loyal British officer, was rewarded with 20,000 acres of land in the area in 1782. He came down Old Kings Road with his four sons and 200 slaves and worked the land with unknown results before being forced to leave. Today, 3,084 acres of the Graham Swamp west of Colbert Lane is owned by the St. Johns River Water Management District.

Spanish land grants resumed after 1783 and the Hernandez family owned the largest tracts in our area. Joseph Martin Hernandez owned three area plantations: Mala Compra at Bings Landing, Bella Vista at Washington Oaks and St. Joseph's, which covered a wide area surrounding the present day Publix in the Palm Harbor shopping center. All these plantations and the large Williams Plantation, which existed in the area of today's Shell station/post office and firehouse, were burned down during the Seminole Indian Wars in the 1830's.

The present-day Grand Haven area was mostly quiet and deserted for many years thereafter, insulated by the Graham Swamp from the sounds of the Civil War and commercial traffic that were continuous on Old Kings Road to the west. When Henry Flagler completed his railroad from St. Augustine to Key West, he took a big inland detour around "the pine covered swamp" area that was to become Palm Coast.

It got a little noisier in this area after November 1882, when a dredge boat began digging a canal through the swamplands from the Matanzas River toward the Halifax to join the two. At the forward end of these early dredge machines, 20 large steel buckets were attached to an "endless chain" scooping up mud, sand and rock from the canal bottom. A new book, *Florida's Big Dig*, details how the stretch of the canal running through the Grand Haven area was the largest hindrance to the completion of the entire Florida East Coast Canal from St. Augustine to the Florida Keys. The original canal was dug east of here, giving present day Island Estates its name. Cutting through the rock and shale that is still clearly visible at the northern end of the old canal took from 1882 to 1906. It later had to be abandoned because it was neither deep nor wide enough. The present Grand Haven pathway is along the new canal built by the Army Corps of Engineers, put in charge of the ICW in 1927.

Flagler County was created from St. Johns and Volusia counties in 1911. Northern tourists motored down the Old Brick Road near Route 100 during the flamboyant, roaring 1920s. Old-time Flagler residents told me stories of moonshine stills hidden in the uninhabited woodlands, and rumor has it that there might be some competing rum runners' bodies buried under the Grand Haven golf course.

Rich tourists went fishing and hunting, for a fee, in the wooded areas south of Grand Haven. And Grand Haven's John Gazzolli was said to have maintained a deer hunting stand in the woods during the early 1970s.

In 1952, a large, modern Lehigh Cement Company factory opened near the southern end of what is now Colbert Lane and Roberts Road. The plant, close to Route 100, employed more than 300 workers until its sudden closing in 1965. The lone smokestack (originally there were two) on the east side of Colbert Lane is all that remains of this once vibrant community industry. Peace and quiet then returned to the area for about four years until the arrival of ITT in 1969.

The international conglomerate bought the old cement plant and 68,000 acres of land. Its Levitt subsidiary announced the beginning of construction of a large new planned community, which according to company officials, would become a city as large as Detroit.

The present-day history of Grand Haven in Palm Coast, Flagler County, Florida, had begun.

Reproduced from *The Oak Tree* with the permission of the author. Contact Art Dycke at artpchistory@bellsouth.net or 446-8636 with questions, corrections and information/photos for future articles.

Next: From ITT to LandMar

M Louis & COMPANY

HAIR & NAIL SALON

WELCOMES

Melissa Medieros & Tiffany Misgils
to the style team at M Louis & Company

386.445.1338

10 Cypress Point Pkwy, Ste 103
Palm Coast, FL 32137
Behind the Goodwill store

Tues-Thur 10-7, Fri 10-6, Sat 9-4



\$10 off
for every \$60 Spent
offer valid for Carol only

Carol Bateman
386.264.0977
now at M Louis

*Make an
appointment
today!*

Tavolacci
Realty Inc.

Selling or Buying



I live in Grand Haven
& love this community!

Denise Gallo, REALTOR®

Your Grand Haven Real Estate Specialist!
CALL ME TODAY - 386-843-9177

"I'm waiting to make your DREAMS come true!"

gallogenise@yahoo.com
200 S. Oceanshore Blvd
Flagler Beach, FL 32136



**FAMILY SESSIONS
AVAILABLE!**

Family sessions starting at
\$150 (session fee)

Book today to lock in your price!
Prices will be going up September 1st, 2012.
Ask about this year's Holiday Mini Sessions
coming soon this October!

HeatherFranklinPhotography@yahoo.com
386.315.1560 Find me on Facebook



7 Old Kings Road, North
 (Next to Staples)
 386-446-1967
 Store Hours 9:30 to 5:00
 Closed on Sunday

We're a second generation run store and part of the largest group of independently owned bookstores in the country with approximately 100 stores from coast to coast.

The Book Rack exists for people like you, who simply love to read books. Not to mention hold, talk about, share, and just be surrounded by them.

Our roots go back to the early 1960s, which might explain the Book Rack's somewhat free-spirited development. Our stores are connected by a common thread of trading and selling used books, but cookie-cutter we are not. Each store is a unique, independent establishment, shaped organically by its owners and customers. While the trade-in policy and inventory differ from store to store, what you will find at every Book Rack is a great selection of books — and people who are as crazy about them as you are.



The Fine Art of Selling Real Estate
Art Ryan
 BROKER ASSOCIATE CRS

Watson
 Realty Group, LLC REALTORS

**Celebrating Our 10th Year
 Serving Grand Haven.**
Call today for our Anniversary Special!

SPECIALIZING IN GRAND HAVEN AND FLAGLER COUNTY'S
 FINEST COASTAL & GATED COMMUNITIES

386-864-0838
Contact Me For All Of Your Real Estate Needs...
Buying, selling, investing, rental, mortgage & title services.

www.ArtRyanTeam.com

GIVE YOUR HOME A FACE LIFT.

- ◆ WINDOW WASHING
- ◆ PRESSURE WASHING
- ◆ GUTTER CLEANING
- ◆ DRYER VENTS CLEANED
- ◆ TORN SCREENS REPAIRED
- ◆ LAWN CARE
- ◆ IRRIGATION SYSTEM REPAIRS

386-986-7245
 YOU KNOW US, WE LIVE HERE
 EXPERIENCED, LICENSED AND INSURED

EXTERIOR CLEANING
 WINDOWS | GUTTERS | DECKS & MORE

BETTY'S PROFESSIONAL SERVICES

*In violation of Association Codes?
 Received notice of a pending fine?
 Don't know where to turn? Let us help!*

FREE ESTIMATES
SATISFACTION GUARANTEED

Relax....we can handle it



Put Your Neighborhood Team to work for you.

For all your real estate needs
Sales—Listings—Rentals—Property Management
It's not just business, we live here!

Main Office

One Florida Park Drive
Palm Coast, FL 32137
386-446-2900

Hammock Office

5055 N. Oceanshore Boulevard
Palm Coast, FL 32137
386-446-9001



Gretchen Butler
386-569-1860



Elsbeth Catalano
386-503-1958



Rob Logan
386-585-0752



Patty Stauffer
386-503-3777




Cindy Waters
386-793-8269



Prudential
East Coast Real Estate

www.prueastcoast.com
www.palmcoasthomes.us

© 2012 BRER Affiliates Inc. An independently owned and operated broker member of BRER Affiliates Inc. Prudential, the Prudential logo and the Rock symbol are registered service marks of Prudential Financial, Inc. and its related entities, registered in many jurisdictions worldwide. Used under license with no other affiliation with Prudential. Equal Housing Opportunity. 

GHMA NEWSLETTER

Grand Haven Master Association, Inc.

P.O. Box 354785

Palm Coast, FL 32135

Southern States Management Group	www.ssmgroupinc.com	(386) 446-6333
Grand Haven Master Association	www.grandhavenmhoa.com	(386) 446-6333
Community Development District (CDD)	www.grandhavencdd.org	(386) 447-1888
Grand Haven Main Gate Guard		(386) 445-2376
Village Center Office		(386) 447-0192
Village Center Waterside Café		(386) 447-0239
Grand Haven Golf Club Pro Shop		(386) 445-2327
Grand Haven Golf Club Restaurant		(386) 445-1027
Palm Coast City Hall		(386) 986-3700
Palm Coast Utilities	www.ci.palm-coast.fl.us	(386) 986-2360
Flagler County Property Appraiser	www.flaglerpa.com	(386) 313-4150